



▶ **TRUSTEE AREA
SCENARIOS**

RIM OF THE WORLD RECREATION AND PARK
DISTRICT

FEBRUARY 28, 2022

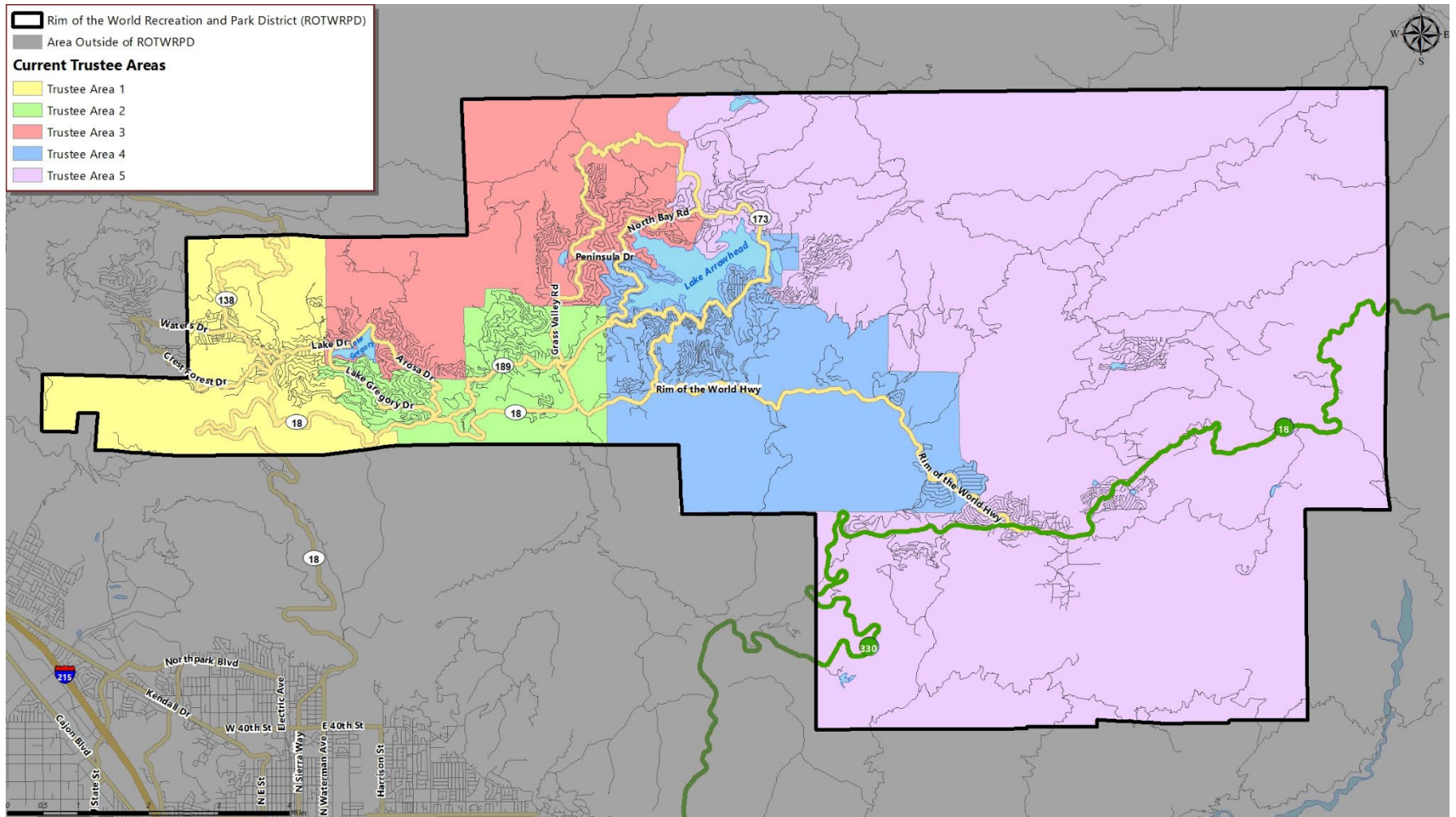


**COOPERATIVE
STRATEGIES**
ASSESS • PLAN • FUND • BUILD

► TIMELINE

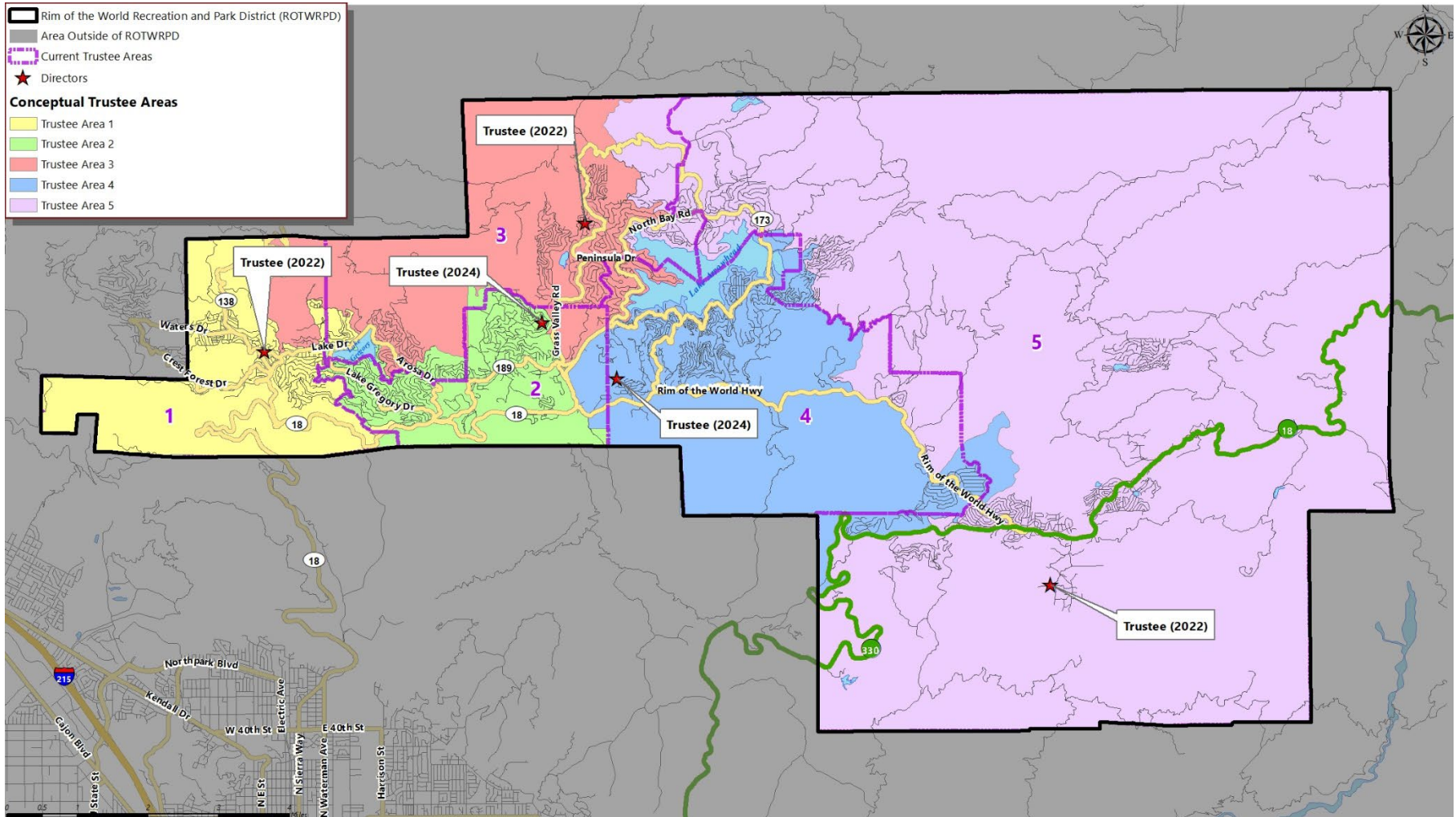
DATE	ACTIVITY
January 24, 2022	Board Meeting: Presentation on Evaluation of Existing Voting Areas Conduct Public Hearing Receive Input on Potential Adjustments
January 24 – February 20, 2022	Cooperative Strategies prepares potential maps of adjusted Voting Areas
February 21, 2022	Draft Maps Posted to ROTW Website
February 28, 2022	Board Meeting: Review Scenarios and Conduct Public Hearing
February 28-March 15, 2022	Cooperative Strategies revises scenarios based on Board and Public Input
March 28, 2022	Board Meeting: Review Maps and Conduct Public Hearing Board Selection of Map
April 15, 2022	Deadline for Board to approve Voting Area adjustments

▶ CURRENT TRUSTEE AREAS



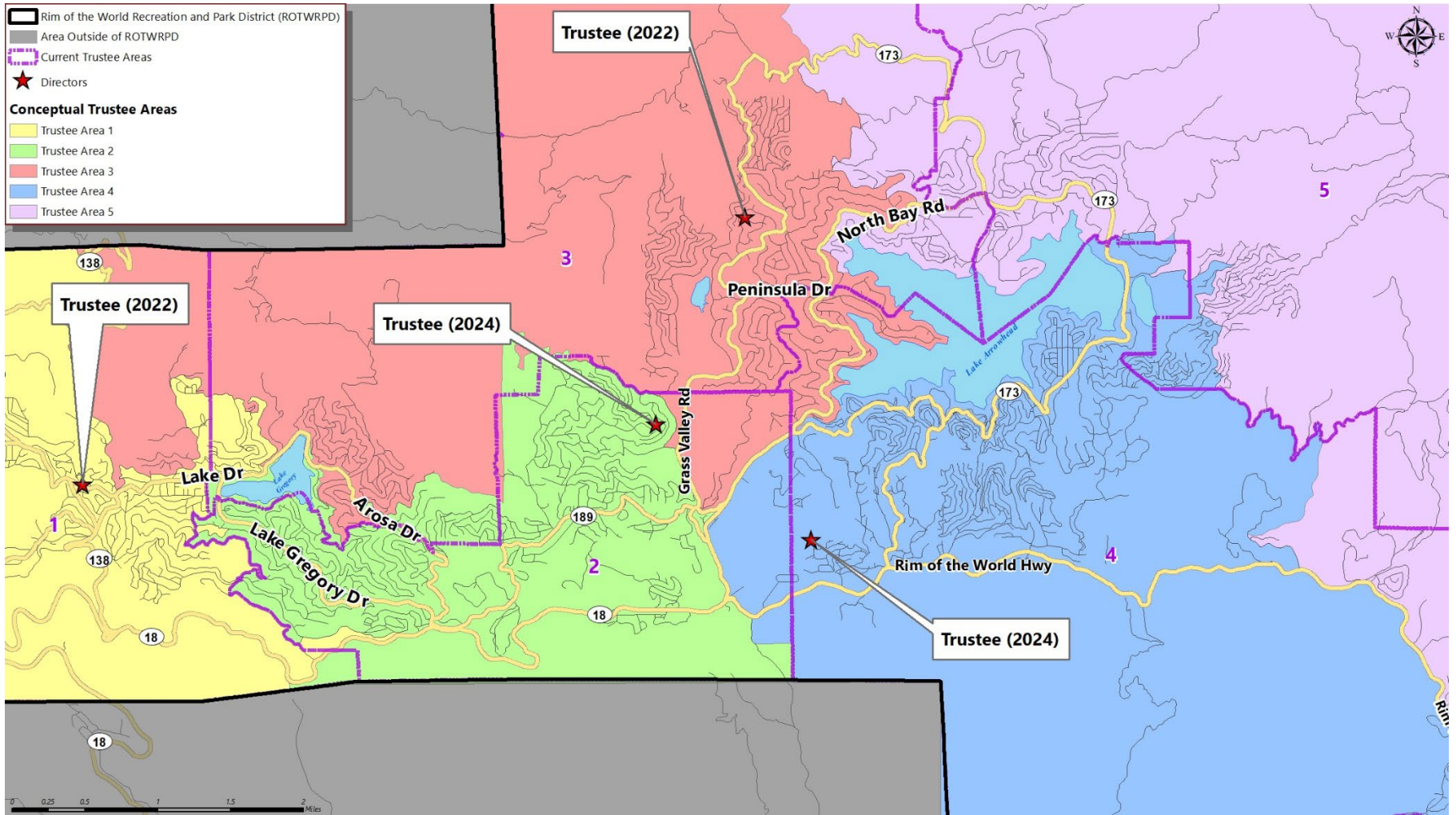
▶ CONCEPTUAL TRUSTEE AREAS

SCENARIO 1



► CONCEPTUAL TRUSTEE AREAS

SCENARIO 1



► DEMOGRAPHICS

SCENARIO 1

Total Population:	28,962	Ideal Trustee Area Size:	5,792	Variance:	3.9%
-------------------	--------	--------------------------	-------	-----------	------

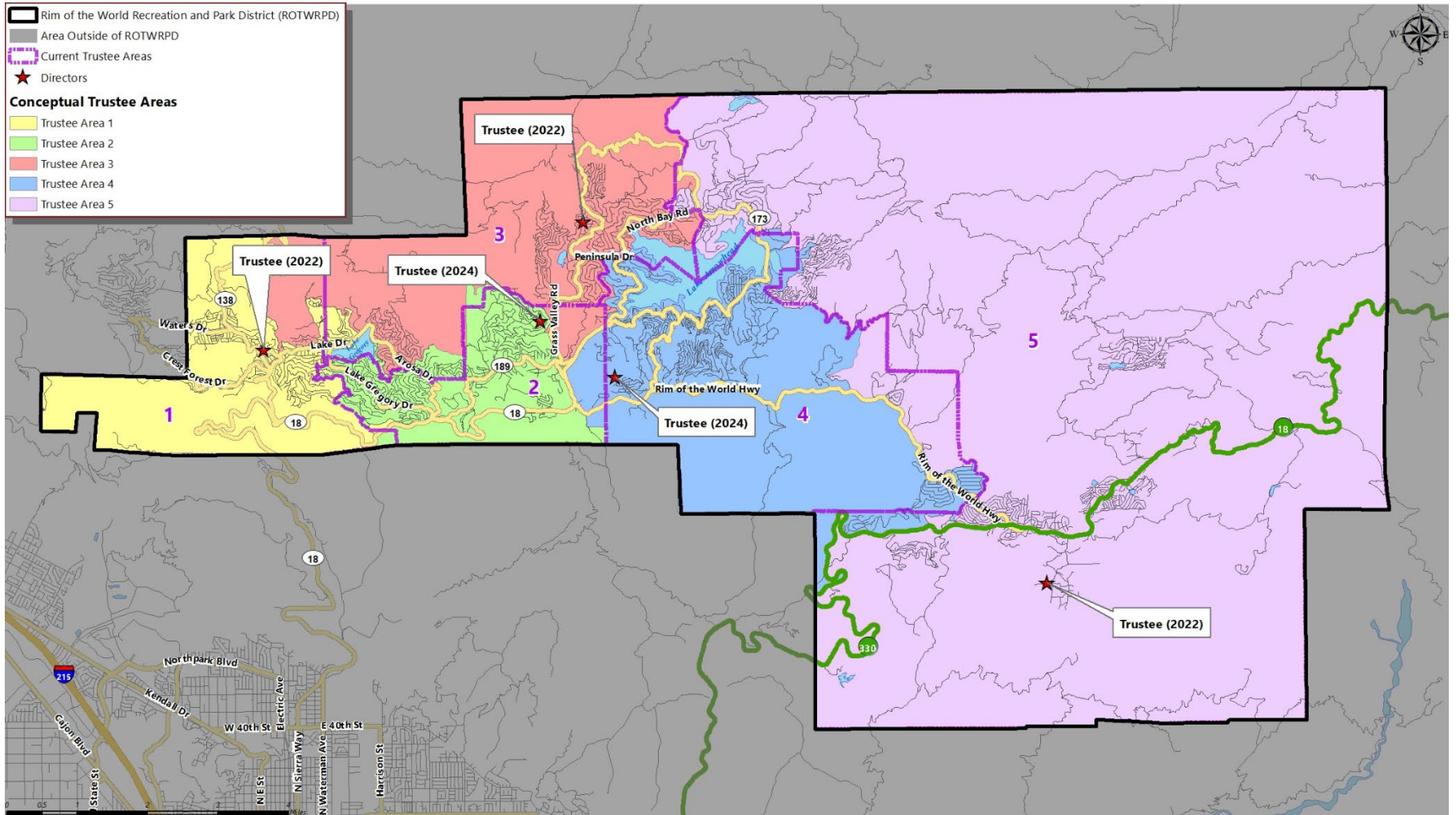
TRUSTEE AREA	Trustee Area 1		Trustee Area 2		Trustee Area 3		Trustee Area 4		Trustee Area 5	
TP* vs. CVAP**	TP	CVAP	TP	CVAP	TP	CVAP	TP	CVAP	TP	CVAP
Population	5,889	3,445	5,846	3,428	5,696	3,444	5,665	2,948	5,866	2,949
Population Variance	1.7%	N/A	0.9%	N/A	-1.7%	N/A	-2.2%	N/A	1.3%	N/A
Hispanic/Latino	27.1%	14.2%	28.1%	17.9%	19.6%	12.9%	23.6%	18.7%	19.0%	11.6%
White	64.9%	81.8%	63.8%	74.7%	71.4%	81.2%	69.7%	75.9%	70.7%	81.3%
Black/African American	1.1%	1.2%	1.1%	1.0%	1.0%	2.4%	1.0%	1.2%	1.3%	1.2%
American Indian/Alaska Native	0.6%	0.6%	0.5%	2.9%	0.5%	0.7%	0.4%	0.1%	0.6%	1.4%
Asian	1.6%	1.6%	1.4%	2.5%	1.4%	1.0%	1.0%	0.8%	2.1%	2.2%
Native Hawaiian/Other Pacific Islander	0.1%	0.0%	0.1%	0.0%	0.2%	0.0%	0.2%	1.4%	0.3%	0.0%
Other	0.6%	N/A	0.7%	N/A	0.8%	N/A	0.5%	N/A	1.0%	N/A
Two or More Races	4.0%	0.5%	4.3%	1.0%	5.1%	1.8%	3.6%	1.9%	5.1%	2.3%

*Total Population; Source: Redistricting Database for California, Published by Statewide Database on September 20, 2021

**Citizen Voting Age Population (CVAP); Source: American Community Survey, 2015-2019 Data

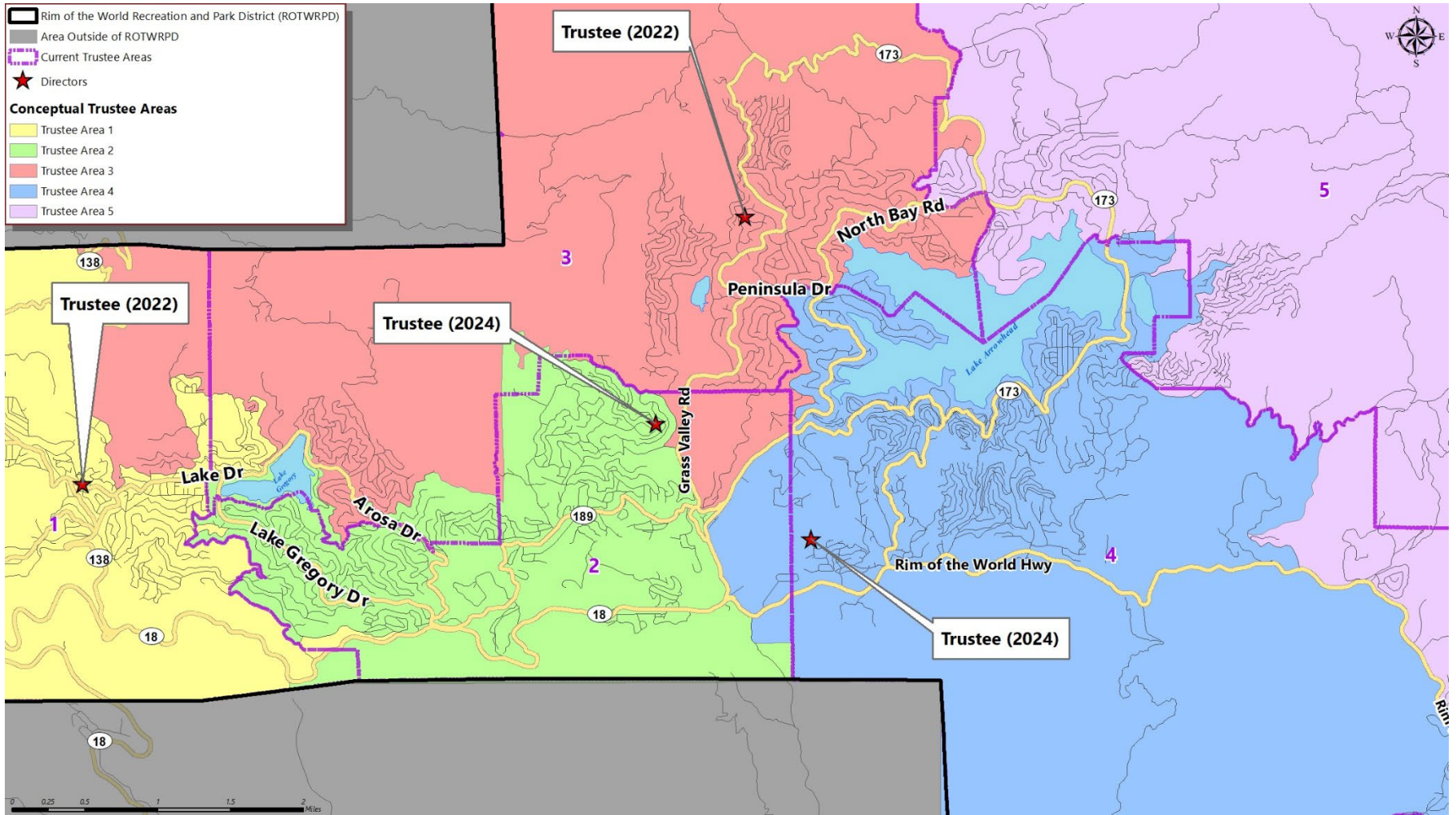
▶ CONCEPTUAL TRUSTEE AREAS

SCENARIO 2



▶ CONCEPTUAL TRUSTEE AREAS

SCENARIO 2



► DEMOGRAPHICS

SCENARIO 2

Total Population:	28,962	Ideal Trustee Area Size:	5,792	Variance:	3.2%
-------------------	--------	--------------------------	-------	-----------	------

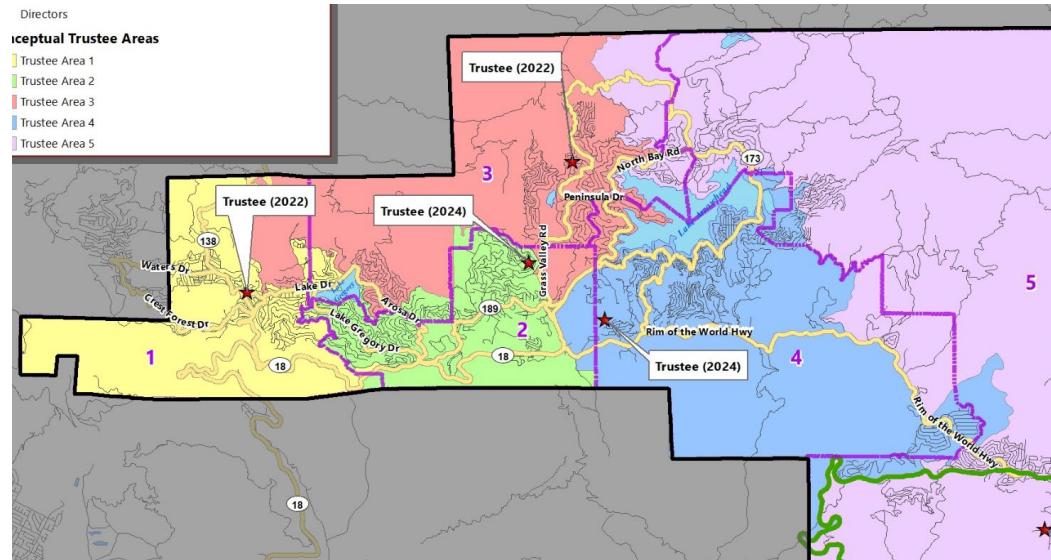
TRUSTEE AREA	Trustee Area 1		Trustee Area 2		Trustee Area 3		Trustee Area 4		Trustee Area 5	
TP* vs. CVAP**	TP	CVAP	TP	CVAP	TP	CVAP	TP	CVAP	TP	CVAP
Population	5,889	3,445	5,846	3,428	5,750	3,415	5,773	2,967	5,704	2,959
Population Variance	1.7%	N/A	0.9%	N/A	-0.7%	N/A	-0.3%	N/A	-1.5%	N/A
Hispanic/Latino	27.1%	14.2%	28.1%	17.9%	19.1%	12.0%	21.8%	17.7%	21.2%	13.6%
White	64.9%	81.8%	63.8%	74.7%	72.0%	81.9%	71.5%	77.7%	68.3%	78.9%
Black/African American	1.1%	1.2%	1.1%	1.0%	1.1%	2.4%	0.8%	1.0%	1.4%	1.3%
American Indian/Alaska Native	0.6%	0.6%	0.5%	2.9%	0.5%	0.7%	0.4%	0.1%	0.6%	1.4%
Asian	1.6%	1.6%	1.4%	2.5%	1.7%	1.1%	1.0%	0.8%	2.0%	2.1%
Native Hawaiian/Other Pacific Islander	0.1%	0.0%	0.1%	0.0%	0.2%	0.0%	0.2%	1.3%	0.3%	0.0%
Other	0.6%	N/A	0.7%	N/A	0.7%	N/A	0.6%	N/A	1.0%	N/A
Two or More Races	4.0%	0.5%	4.3%	1.0%	4.7%	1.8%	3.8%	1.2%	5.3%	2.9%

*Total Population; Source: Redistricting Database for California, Published by Statewide Database on September 20, 2021

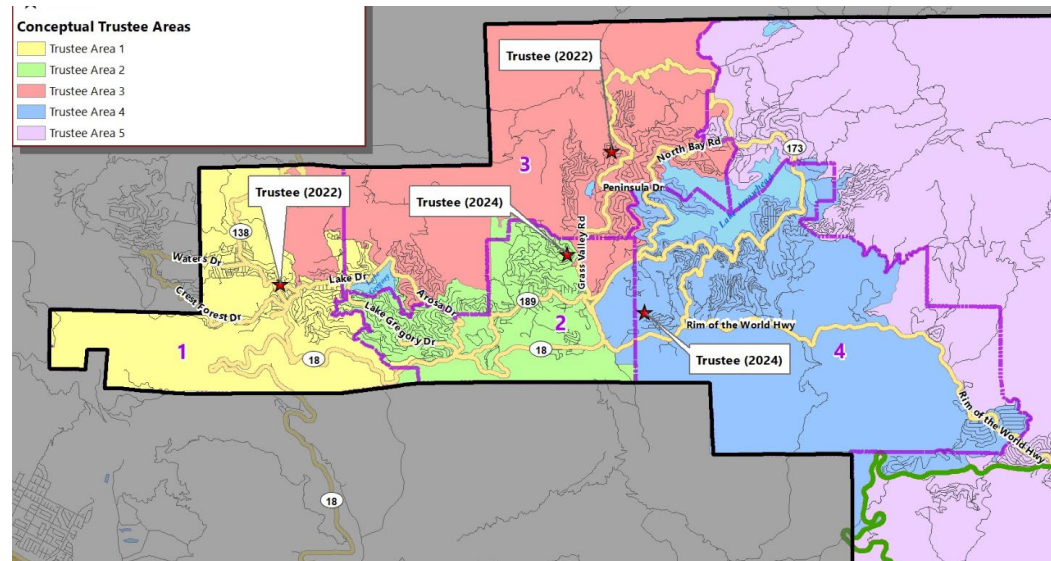
**Citizen Voting Age Population (CVAP); Source: American Community Survey, 2015-2019 Data

▶ CONCEPTUAL TRUSTEE AREAS - DIFFERENCES

Scenario 1

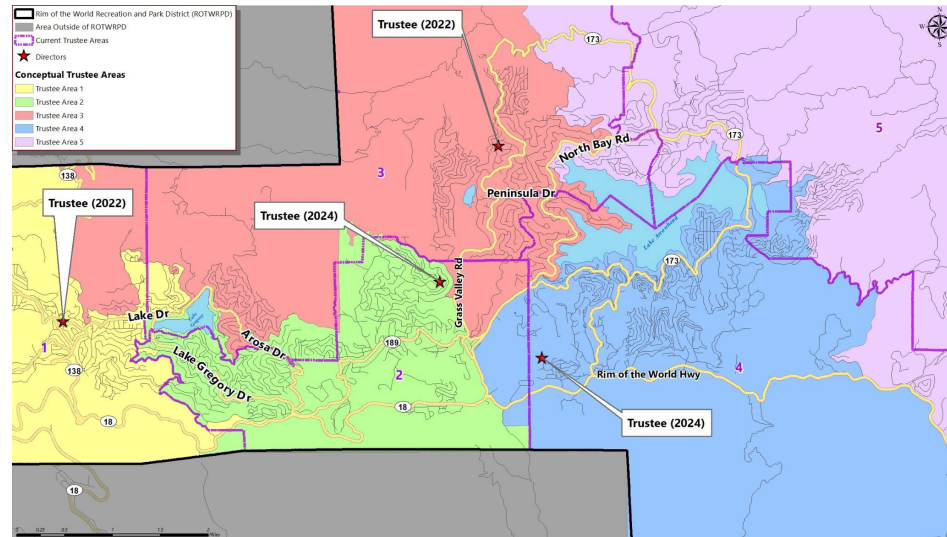


Scenario 2

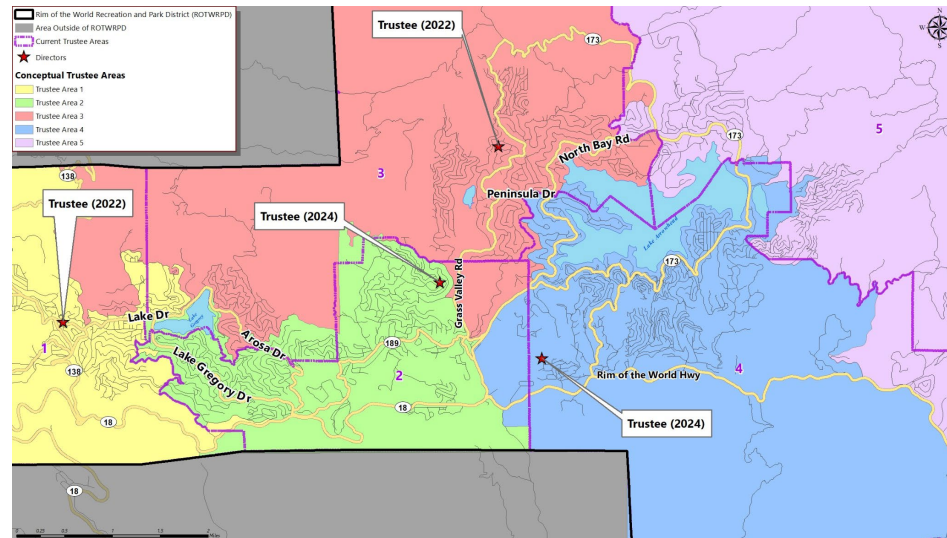


▶ CONCEPTUAL TRUSTEE AREAS – DIFFERENCES - ZOOMED

Scenario 1



Scenario 2



A row of yellow school buses is parked in a grassy field under a cloudy sky. A large, stylized, semi-transparent 'S' graphic is overlaid on the image, framing the word 'QUESTIONS' in the center. The buses are yellow with black trim and have 'SCHOOL BUS' written on their sides. The field is green with some yellow wildflowers. The sky is blue with white clouds.

QUESTIONS

A row of yellow school buses is parked in a grassy field under a cloudy sky. A large, stylized, semi-transparent 'S' graphic is overlaid on the image, framing the text. The word 'APPENDICES' is written in white, uppercase letters across the center of the 'S'.

APPENDICES

▶ CONSIDERATIONS IN TRUSTEE AREAS



Each area shall contain nearly equal number of inhabitants



Follow man-made and natural geographic features, as much as possible



Drawn to comply with the Federal Voting Rights Act



Respect incumbency, if possible



Compact and contiguous, as much as possible

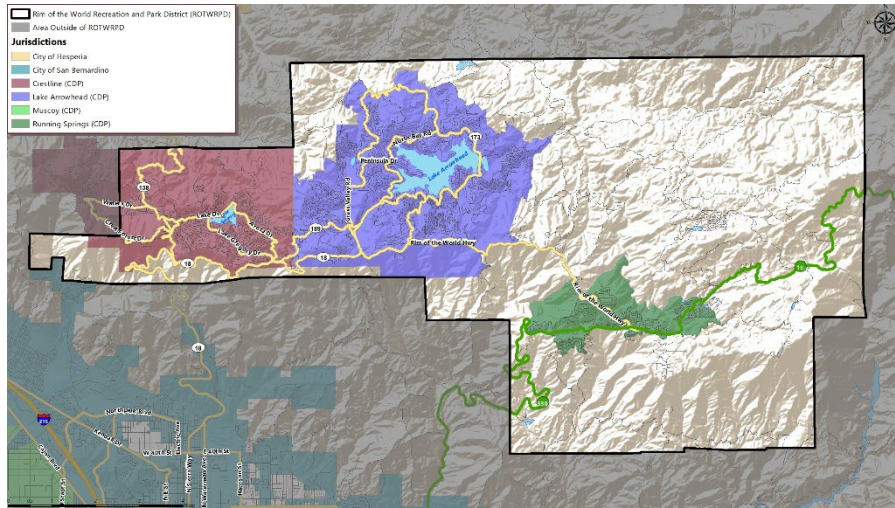


Other local considerations (i.e., school boundaries, locations of school sites)



Respect communities of interest, as much as possible

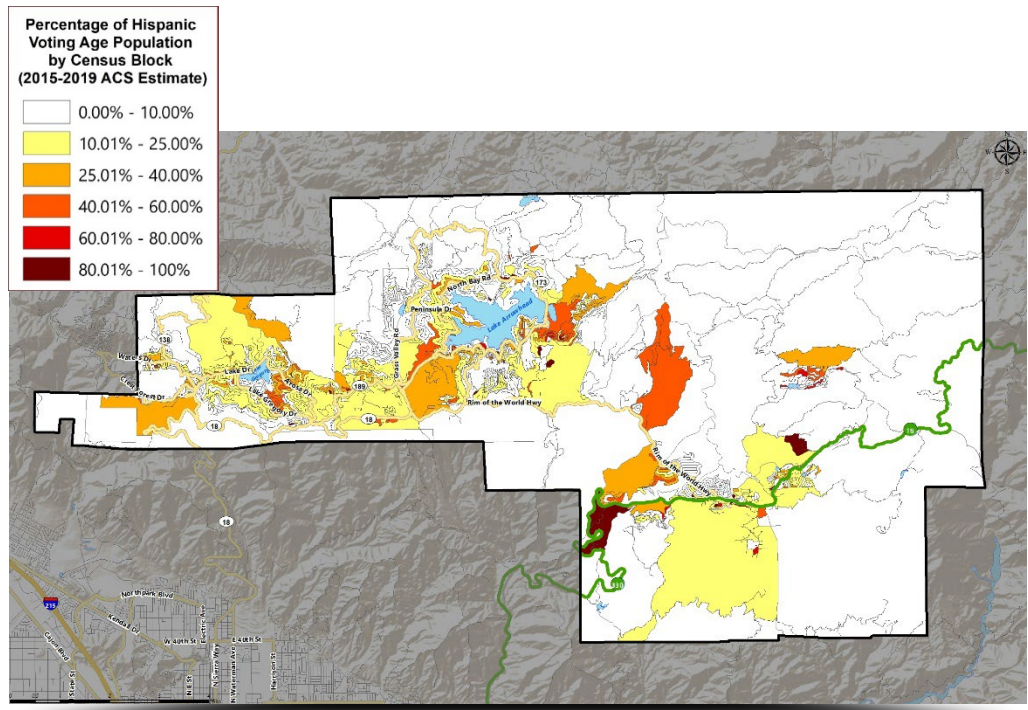
▶ DISTRICT DEMOGRAPHICS 2020 CENSUS DATA



Population	Total Population		Age 18 and over	
	Total	%	Total	%
Hispanic/Latino	6,822	23.5%	4,748	20.2%
White	19,749	68.1%	16,875	71.7%
Black / African American	317	1.1%	254	1.1%
American Indian /Alaska Native	150	0.5%	140	0.6%
Asian	441	1.5%	407	1.7%
Native Hawaiian/ Pacific Islander	46	0.2%	38	0.2%
Other	206	0.7%	148	0.6%
Two or More Races	1,289	4.4%	914	3.9%
Total	29,020	100%	23,524	100%

▶ DISTRICT DEMOGRAPHICS

CITIZEN VOTING AGE POPULATION ESTIMATES



Population	2015-2019 CVAP	
	Total	%
Hispanic/Latino	2,414	14.9%
White	12,880	79.3%
Black / African American	229	1.4%
American Indian / Alaska Native	188	1.2%
Asian	266	1.6%
Native Hawaiian/ Pacific Islander	40	0.2%
Two or More Races	235	1.4%
Total	16,252	100%

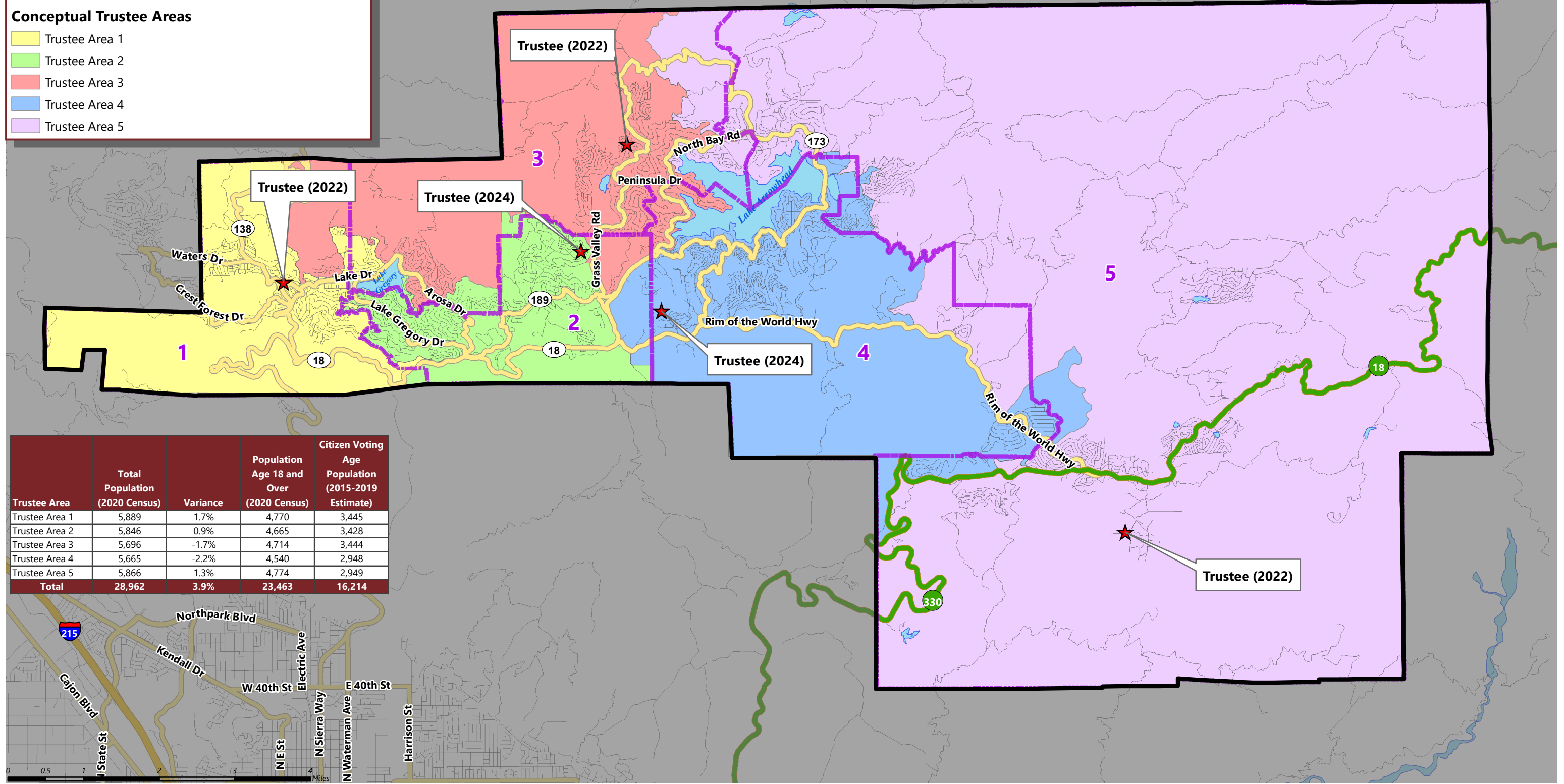
RIM OF THE WORLD RECREATION AND PARK DISTRICT

CONCEPTUAL TRUSTEE AREAS - SCENARIO 1

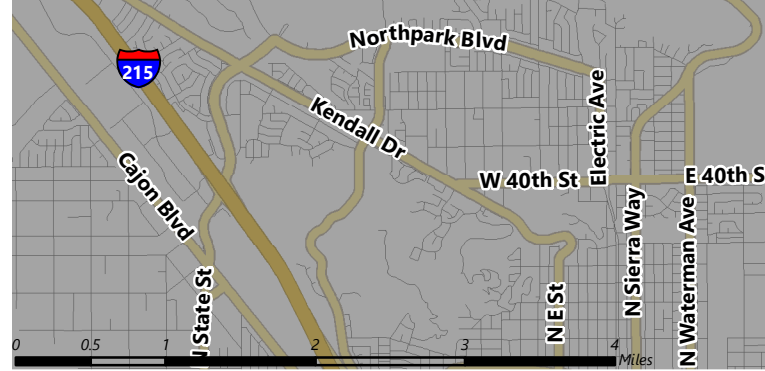
Rim of the World Recreation and Park District (ROTWRPD)
 Area Outside of ROTWRPD
 Current Trustee Areas
★ Directors

Conceptual Trustee Areas

- Trustee Area 1
- Trustee Area 2
- Trustee Area 3
- Trustee Area 4
- Trustee Area 5



Trustee Area	Total Population (2020 Census)	Variance	Population Age 18 and Over (2020 Census)	Citizen Voting Age Population (2015-2019 Estimate)
Trustee Area 1	5,889	1.7%	4,770	3,445
Trustee Area 2	5,846	0.9%	4,665	3,428
Trustee Area 3	5,696	-1.7%	4,714	3,444
Trustee Area 4	5,665	-2.2%	4,540	2,948
Trustee Area 5	5,866	1.3%	4,774	2,949
Total	28,962	3.9%	23,463	16,214



February 2022

RIM OF THE WORLD RECREATION AND PARK DISTRICT

CONCEPTUAL TRUSTEE AREAS - SCENARIO 1

Total Population:	28,962	Ideal Population:	5,792	Variance:	3.9%
--------------------------	---------------	--------------------------	--------------	------------------	-------------

Total Population (2020 Census)					
	Trustee Area 1	Trustee Area 2	Trustee Area 3	Trustee Area 4	Trustee Area 5
Population	5,889	5,846	5,696	5,665	5,866
Population Variance	97	54	-96	-127	74
	1.7%	0.9%	-1.7%	-2.2%	1.3%
Hispanic/Latino	27.1%	28.1%	19.6%	23.6%	19.0%
White	64.9%	63.8%	71.4%	69.7%	70.7%
Black/ African American	1.1%	1.1%	1.0%	1.0%	1.3%
American Indian/ Alaska Native	0.6%	0.5%	0.5%	0.4%	0.6%
Asian	1.6%	1.4%	1.4%	1.0%	2.1%
Native Hawaiian/ Other Pacific Islander	0.1%	0.1%	0.2%	0.2%	0.3%
Other	0.6%	0.7%	0.8%	0.5%	1.0%
Two or More Races	4.0%	4.3%	5.1%	3.6%	5.1%

Population 18 and Over (2020 Census)					
	Trustee Area 1	Trustee Area 2	Trustee Area 3	Trustee Area 4	Trustee Area 5
Population	4,770	4,665	4,714	4,540	4,774
Hispanic/Latino	23.5%	24.0%	16.9%	19.8%	16.6%
White	68.5%	68.1%	74.3%	73.9%	74.0%
Black/ African American	1.0%	1.2%	1.0%	1.0%	1.2%
American Indian/ Alaska Native	0.6%	0.6%	0.6%	0.5%	0.7%
Asian	1.8%	1.6%	1.7%	1.2%	2.4%
Native Hawaiian/ Other Pacific Islander	0.1%	0.1%	0.1%	0.2%	0.3%
Other	0.6%	0.5%	0.8%	0.5%	0.7%
Two or More Races	3.9%	3.9%	4.6%	2.9%	4.1%

Citizens by Voting Age Population Estimate (2015-2019)					
	Trustee Area 1	Trustee Area 2	Trustee Area 3	Trustee Area 4	Trustee Area 5
Population	3,445	3,428	3,444	2,948	2,949
Hispanic/Latino	14.2%	17.9%	12.9%	18.7%	11.6%
White	81.8%	74.7%	81.2%	75.9%	81.3%
Black/ African American	1.2%	1.0%	2.4%	1.2%	1.2%
American Indian/ Alaska Native	0.6%	2.9%	0.7%	0.1%	1.4%
Asian	1.6%	2.5%	1.0%	0.8%	2.2%
Native Hawaiian/ Other Pacific Islander	0.0%	0.0%	0.0%	1.4%	0.0%
Other	N/A	N/A	N/A	N/A	N/A
Two or More Races	0.5%	1.0%	1.8%	1.9%	2.3%

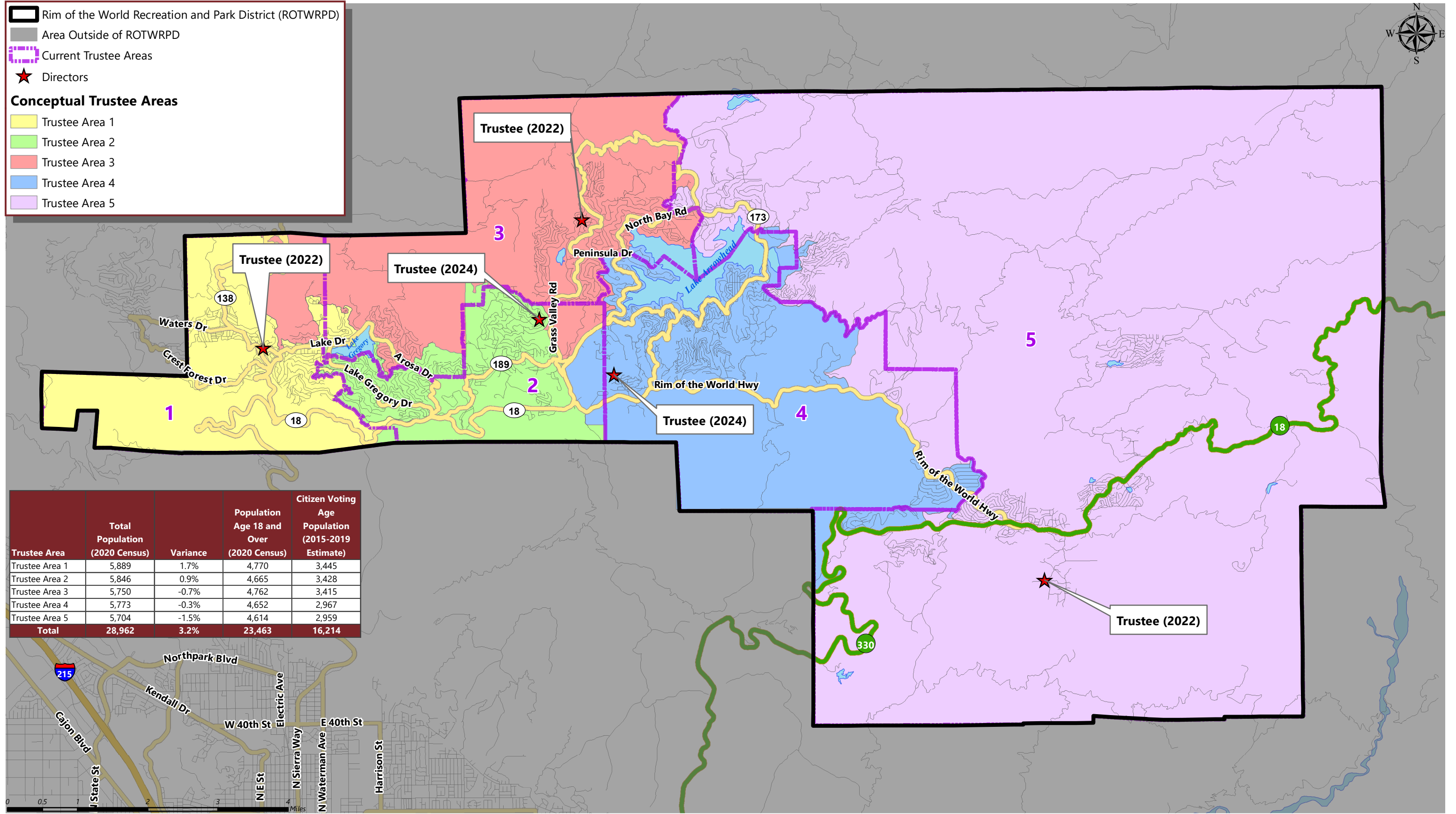
RIM OF THE WORLD RECREATION AND PARK DISTRICT

CONCEPTUAL TRUSTEE AREAS - SCENARIO 2

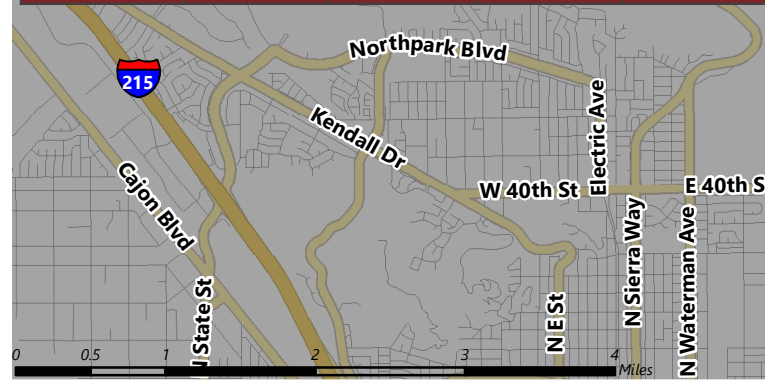
Rim of the World Recreation and Park District (ROTWRPD)
 Area Outside of ROTWRPD
 Current Trustee Areas
★ Directors

Conceptual Trustee Areas

- Trustee Area 1
- Trustee Area 2
- Trustee Area 3
- Trustee Area 4
- Trustee Area 5



Trustee Area	Total Population (2020 Census)	Variance	Population Age 18 and Over (2020 Census)	Citizen Voting Age Population (2015-2019 Estimate)
Trustee Area 1	5,889	1.7%	4,770	3,445
Trustee Area 2	5,846	0.9%	4,665	3,428
Trustee Area 3	5,750	-0.7%	4,762	3,415
Trustee Area 4	5,773	-0.3%	4,652	2,967
Trustee Area 5	5,704	-1.5%	4,614	2,959
Total	28,962	3.2%	23,463	16,214



RIM OF THE WORLD RECREATION AND PARK DISTRICT

CONCEPTUAL TRUSTEE AREAS - SCENARIO 2

Total Population:	28,962	Ideal Population:	5,792	Variance:	3.2%
--------------------------	---------------	--------------------------	--------------	------------------	-------------

Total Population (2020 Census)					
	Trustee Area 1	Trustee Area 2	Trustee Area 3	Trustee Area 4	Trustee Area 5
Population	5,889	5,846	5,750	5,773	5,704
Population Variance	97	54	-42	-19	-88
	1.7%	0.9%	-0.7%	-0.3%	-1.5%
Hispanic/Latino	27.1%	28.1%	19.1%	21.8%	21.2%
White	64.9%	63.8%	72.0%	71.5%	68.3%
Black/ African American	1.1%	1.1%	1.1%	0.8%	1.4%
American Indian/ Alaska Native	0.6%	0.5%	0.5%	0.4%	0.6%
Asian	1.6%	1.4%	1.7%	1.0%	2.0%
Native Hawaiian/ Other Pacific Islander	0.1%	0.1%	0.2%	0.2%	0.3%
Other	0.6%	0.7%	0.7%	0.6%	1.0%
Two or More Races	4.0%	4.3%	4.7%	3.8%	5.3%

Population 18 and Over (2020 Census)					
	Trustee Area 1	Trustee Area 2	Trustee Area 3	Trustee Area 4	Trustee Area 5
Population	4,770	4,665	4,762	4,652	4,614
Hispanic/Latino	23.5%	24.0%	16.7%	18.0%	18.6%
White	68.5%	68.1%	74.6%	75.9%	71.7%
Black/ African American	1.0%	1.2%	1.0%	0.9%	1.3%
American Indian/ Alaska Native	0.6%	0.6%	0.5%	0.5%	0.7%
Asian	1.8%	1.6%	1.9%	1.1%	2.2%
Native Hawaiian/ Other Pacific Islander	0.1%	0.1%	0.2%	0.1%	0.3%
Other	0.6%	0.5%	0.7%	0.6%	0.7%
Two or More Races	3.9%	3.9%	4.4%	2.9%	4.4%

Citizens by Voting Age Population Estimate (2015-2019)					
	Trustee Area 1	Trustee Area 2	Trustee Area 3	Trustee Area 4	Trustee Area 5
Population	3,445	3,428	3,415	2,967	2,959
Hispanic/Latino	14.2%	17.9%	12.0%	17.7%	13.6%
White	81.8%	74.7%	81.9%	77.7%	78.9%
Black/ African American	1.2%	1.0%	2.4%	1.0%	1.3%
American Indian/ Alaska Native	0.6%	2.9%	0.7%	0.1%	1.4%
Asian	1.6%	2.5%	1.1%	0.8%	2.1%
Native Hawaiian/ Other Pacific Islander	0.0%	0.0%	0.0%	1.3%	0.0%
Other	N/A	N/A	N/A	N/A	N/A
Two or More Races	0.5%	1.0%	1.8%	1.2%	2.9%