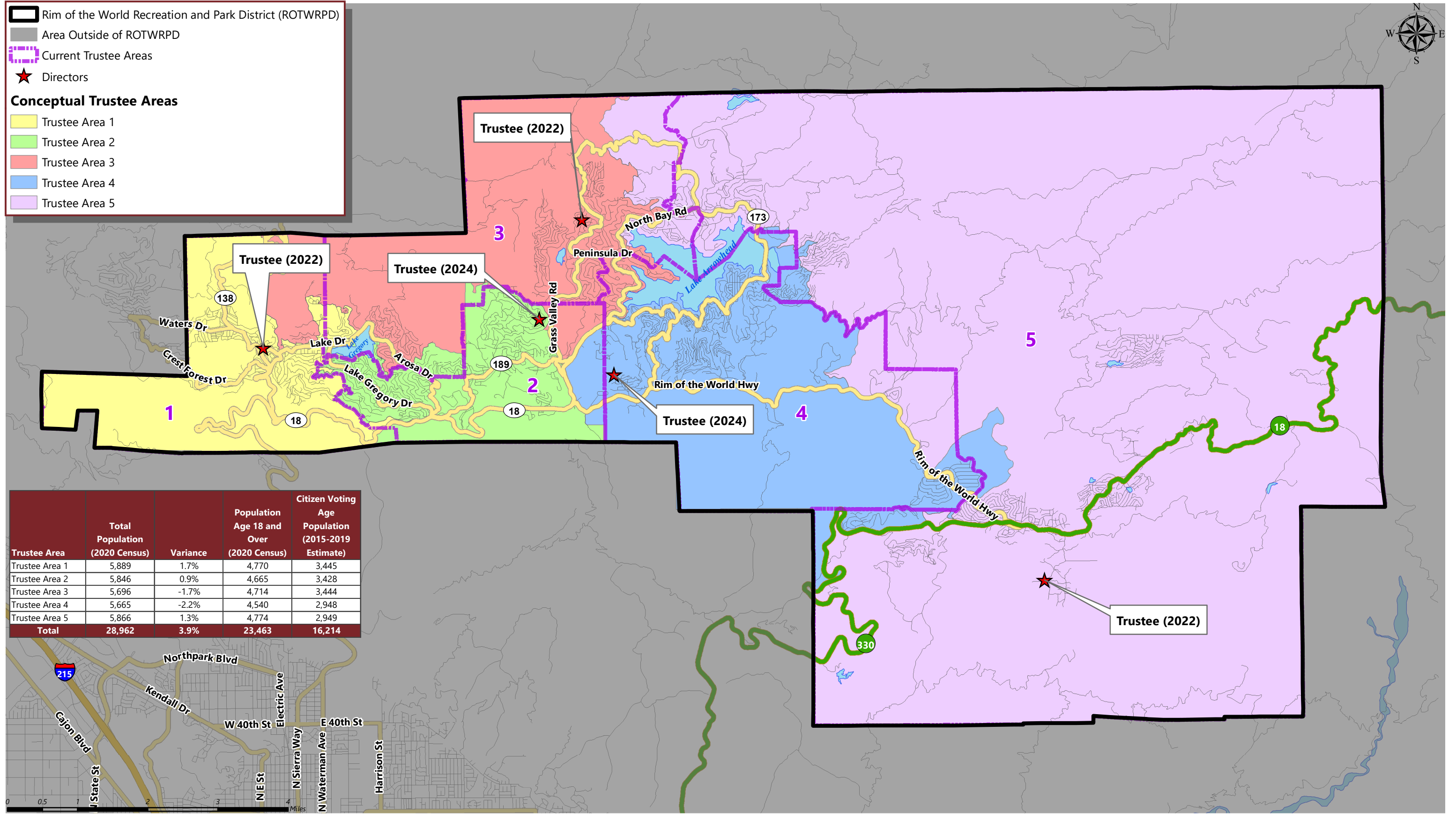


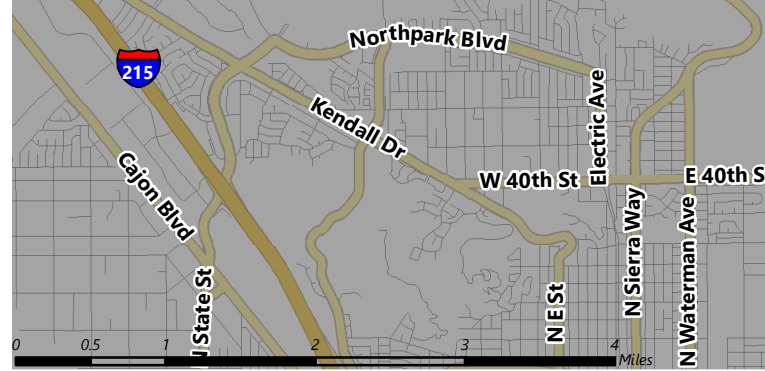
Rim of the World Recreation and Park District (ROTWRPD)  
 Area Outside of ROTWRPD  
 Current Trustee Areas  
★ Directors

**Conceptual Trustee Areas**

- Trustee Area 1
- Trustee Area 2
- Trustee Area 3
- Trustee Area 4
- Trustee Area 5



Trustee Area	Total Population (2020 Census)	Variance	Population Age 18 and Over (2020 Census)	Citizen Voting Age Population (2015-2019 Estimate)
Trustee Area 1	5,889	1.7%	4,770	3,445
Trustee Area 2	5,846	0.9%	4,665	3,428
Trustee Area 3	5,696	-1.7%	4,714	3,444
Trustee Area 4	5,665	-2.2%	4,540	2,948
Trustee Area 5	5,866	1.3%	4,774	2,949
<b>Total</b>	<b>28,962</b>	<b>3.9%</b>	<b>23,463</b>	<b>16,214</b>



February 2022

# RIM OF THE WORLD RECREATION AND PARK DISTRICT

CONCEPTUAL TRUSTEE AREAS - SCENARIO 1

<b>Total Population:</b>	<b>28,962</b>	<b>Ideal Population:</b>	<b>5,792</b>	<b>Variance:</b>	<b>3.9%</b>
--------------------------	---------------	--------------------------	--------------	------------------	-------------

<b>Total Population (2020 Census)</b>					
	<b>Trustee Area 1</b>	<b>Trustee Area 2</b>	<b>Trustee Area 3</b>	<b>Trustee Area 4</b>	<b>Trustee Area 5</b>
Population	5,889	5,846	5,696	5,665	5,866
Population Variance	97	54	-96	-127	74
	1.7%	0.9%	-1.7%	-2.2%	1.3%
Hispanic/Latino	27.1%	28.1%	19.6%	23.6%	19.0%
White	64.9%	63.8%	71.4%	69.7%	70.7%
Black/ African American	1.1%	1.1%	1.0%	1.0%	1.3%
American Indian/ Alaska Native	0.6%	0.5%	0.5%	0.4%	0.6%
Asian	1.6%	1.4%	1.4%	1.0%	2.1%
Native Hawaiian/ Other Pacific Islander	0.1%	0.1%	0.2%	0.2%	0.3%
Other	0.6%	0.7%	0.8%	0.5%	1.0%
Two or More Races	4.0%	4.3%	5.1%	3.6%	5.1%

<b>Population 18 and Over (2020 Census)</b>					
	<b>Trustee Area 1</b>	<b>Trustee Area 2</b>	<b>Trustee Area 3</b>	<b>Trustee Area 4</b>	<b>Trustee Area 5</b>
Population	4,770	4,665	4,714	4,540	4,774
Hispanic/Latino	23.5%	24.0%	16.9%	19.8%	16.6%
White	68.5%	68.1%	74.3%	73.9%	74.0%
Black/ African American	1.0%	1.2%	1.0%	1.0%	1.2%
American Indian/ Alaska Native	0.6%	0.6%	0.6%	0.5%	0.7%
Asian	1.8%	1.6%	1.7%	1.2%	2.4%
Native Hawaiian/ Other Pacific Islander	0.1%	0.1%	0.1%	0.2%	0.3%
Other	0.6%	0.5%	0.8%	0.5%	0.7%
Two or More Races	3.9%	3.9%	4.6%	2.9%	4.1%

<b>Citizens by Voting Age Population Estimate (2015-2019)</b>					
	<b>Trustee Area 1</b>	<b>Trustee Area 2</b>	<b>Trustee Area 3</b>	<b>Trustee Area 4</b>	<b>Trustee Area 5</b>
Population	3,445	3,428	3,444	2,948	2,949
Hispanic/Latino	14.2%	17.9%	12.9%	18.7%	11.6%
White	81.8%	74.7%	81.2%	75.9%	81.3%
Black/ African American	1.2%	1.0%	2.4%	1.2%	1.2%
American Indian/ Alaska Native	0.6%	2.9%	0.7%	0.1%	1.4%
Asian	1.6%	2.5%	1.0%	0.8%	2.2%
Native Hawaiian/ Other Pacific Islander	0.0%	0.0%	0.0%	1.4%	0.0%
Other	N/A	N/A	N/A	N/A	N/A
Two or More Races	0.5%	1.0%	1.8%	1.9%	2.3%