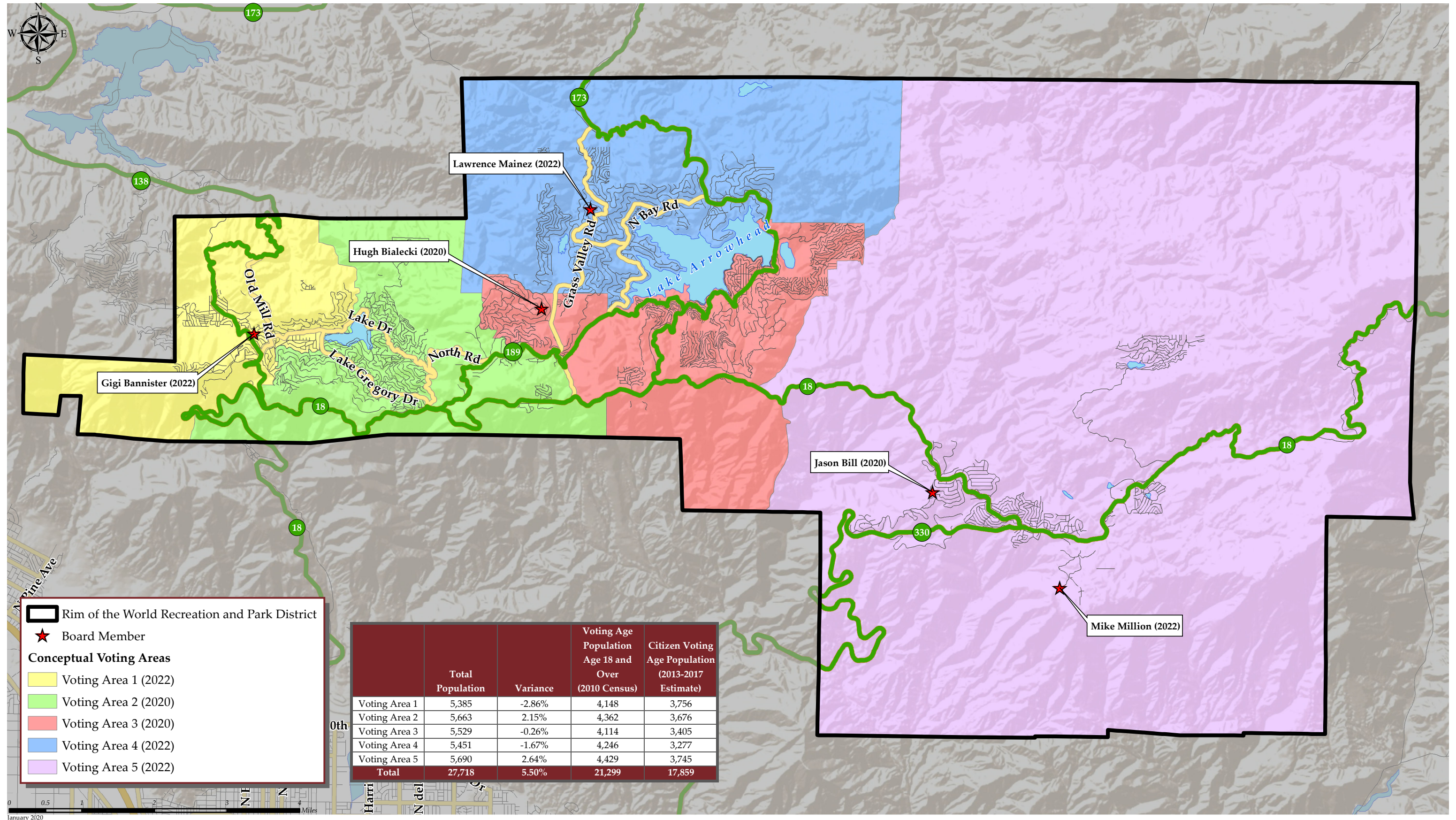


RIM OF THE WORLD RECREATION AND PARK DISTRICT CONCEPTUAL VOTING AREAS - SCENARIO 1



RIM OF THE WORLD RECREATION AND PARK DISTRICT

CONCEPTUAL VOTING AREAS - SCENARIO 1

Total Population (2010 Census)						
	Voting Area 1	Voting Area 2	Voting Area 3	Voting Area 4	Voting Area 5	Variance
Population	5,385	5,663	5,529	5,451	5,690	
Population Variance	-159	119	-15	-93	146	5.50%
	-2.86%	2.15%	-0.26%	-1.67%	2.64%	
Hispanic/Latino	998	1,104	1,557	665	785	
	18.53%	19.49%	28.16%	12.20%	13.80%	
White	4,041	4,210	3,676	4,527	4,563	
	75.04%	74.34%	66.49%	83.05%	80.19%	
Black/ African American	55	47	38	37	25	
	1.02%	0.83%	0.69%	0.68%	0.44%	
American Indian/ Alaska Native	57	51	26	19	37	
	1.06%	0.90%	0.47%	0.35%	0.65%	
Asian	31	63	50	71	58	
	0.58%	1.11%	0.90%	1.30%	1.02%	
Native Hawaiian/ Other Pacific Islander	7	8	19	5	7	
	0.13%	0.14%	0.34%	0.09%	0.12%	
Other	12	3	15	0	11	
	0.22%	0.05%	0.27%	0.00%	0.19%	
Two or More Races	184	177	148	127	204	
	3.42%	3.13%	2.68%	2.33%	3.59%	

Population 18 and Over (2010 Census)						
	Voting Area 1	Voting Area 2	Voting Area 3	Voting Area 4	Voting Area 5	Variance
Population	4,148	4,362	4,114	4,246	4,429	
Population Variance	-112	102	-146	-14	169	3.97%
	-2.62%	2.40%	-3.42%	-0.32%	3.97%	
Hispanic/Latino	618	694	932	406	504	
	14.90%	15.91%	22.65%	9.56%	11.38%	
White	3,271	3,419	2,984	3,668	3,694	
	78.86%	78.38%	72.53%	86.39%	83.40%	
Black/ African American	50	36	27	26	19	
	1.21%	0.83%	0.66%	0.61%	0.43%	
American Indian/ Alaska Native	49	41	24	15	31	
	1.18%	0.94%	0.58%	0.35%	0.70%	
Asian	31	52	43	65	48	
	0.75%	1.19%	1.05%	1.53%	1.08%	
Native Hawaiian/ Other Pacific Islander	6	8	8	5	7	
	0.14%	0.18%	0.19%	0.12%	0.16%	
Other	9	3	11	0	8	
	0.22%	0.07%	0.27%	0.00%	0.18%	
Two or More Races	114	109	85	61	118	
	2.75%	2.50%	2.07%	1.44%	2.66%	

Citizens by Voting Age Population Estimate (2013-2017)						
	Voting Area 1	Voting Area 2	Voting Area 3	Voting Area 4	Voting Area 5	Variance
Population	3,756	3,676	3,405	3,277	3,745	
Population Variance	184	104	-167	-295	173	4.85%
	5.16%	2.92%	-4.67%	-8.25%	4.85%	
Hispanic/Latino	523	641	413	261	284	
	13.92%	17.44%	12.13%	7.96%	7.58%	
White	2,982	2,886	2,833	2,813	3,285	
	79.39%	78.51%	83.20%	85.84%	87.72%	
Black/ African American	56	28	7	65	55	
	1.49%	0.76%	0.21%	1.98%	1.47%	
American Indian/ Alaska Native	74	6	4	15	0	
	1.97%	0.16%	0.12%	0.46%	0.00%	
Asian	71	47	91	78	57	
	1.89%	1.28%	2.67%	2.38%	1.52%	
Native Hawaiian/ Other Pacific Islander	0	0	15	0	1	
	0.00%	0.00%	0.44%	0.00%	0.03%	
Other	0	0	0	0	0	
	0.00%	0.00%	0.00%	0.00%	0.00%	
Two or More Races	50	68	42	45	63	
	1.33%	1.85%	1.23%	1.37%	1.68%	