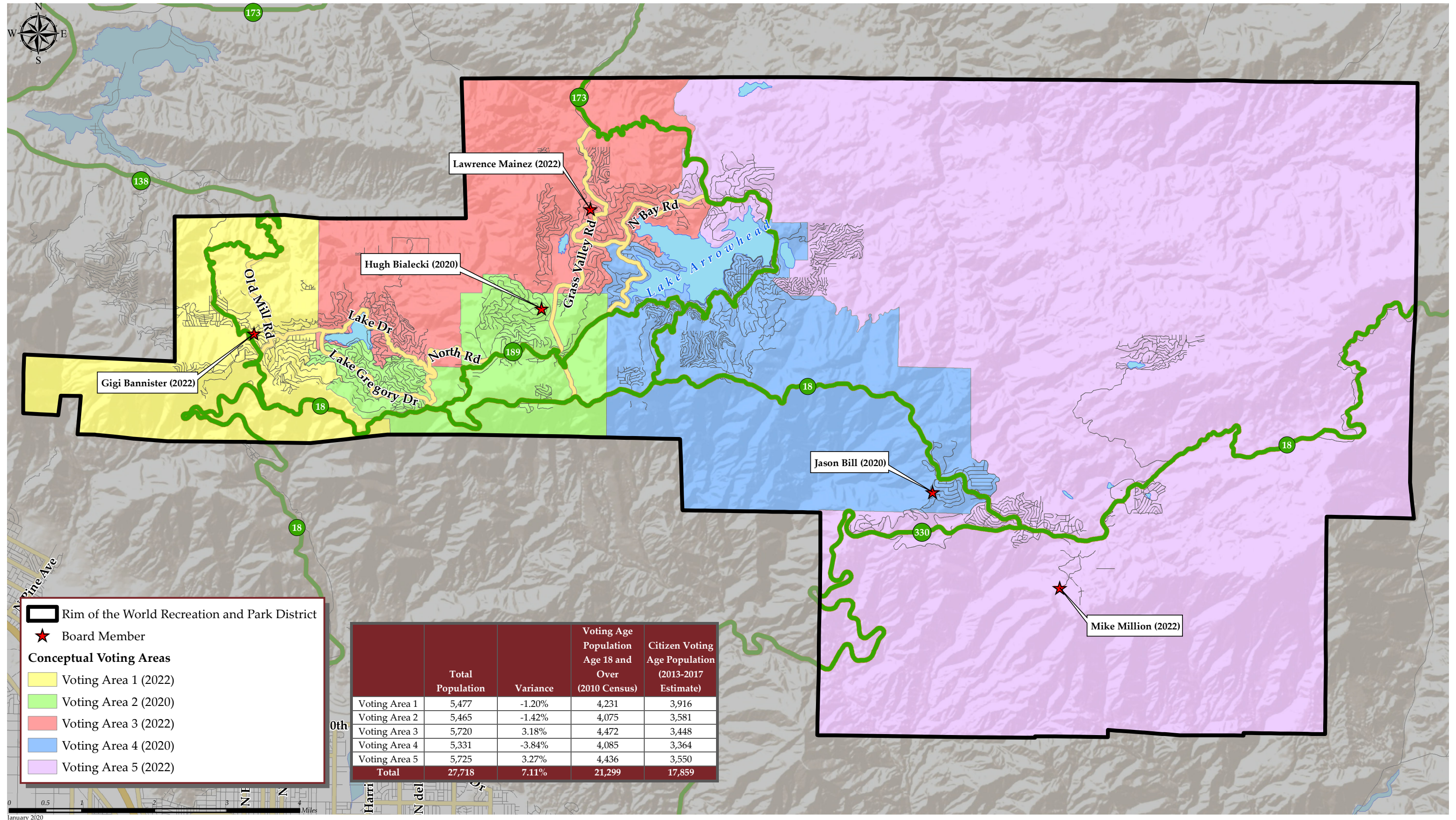


# RIM OF THE WORLD RECREATION AND PARK DISTRICT CONCEPTUAL VOTING AREAS - SCENARIO 2



	Total Population	Variance	Voting Age Population Age 18 and Over (2010 Census)	Citizen Voting Age Population (2013-2017 Estimate)
Voting Area 1	5,477	-1.20%	4,231	3,916
Voting Area 2	5,465	-1.42%	4,075	3,581
Voting Area 3	5,720	3.18%	4,472	3,448
Voting Area 4	5,331	-3.84%	4,085	3,364
Voting Area 5	5,725	3.27%	4,436	3,550
<b>Total</b>	<b>27,718</b>	<b>7.11%</b>	<b>21,299</b>	<b>17,859</b>

January 2020

# RIM OF THE WORLD RECREATION AND PARK DISTRICT

## CONCEPTUAL VOTING AREAS - SCENARIO 2

Total Population (2010 Census)						
	Voting Area 1	Voting Area 2	Voting Area 3	Voting Area 4	Voting Area 5	Variance
Population	5,477	5,465	5,720	5,331	5,725	
Population Variance	-67	-79	176	-213	181	7.11%
	-1.20%	-1.42%	3.18%	-3.84%	3.27%	
Hispanic/Latino	998	1,332	713	1,065	1,001	
	18.22%	24.37%	12.47%	19.98%	17.48%	
White	4,134	3,788	4,709	3,956	4,430	
	75.48%	69.31%	82.33%	74.21%	77.38%	
Black/ African American	51	41	38	39	33	
	0.93%	0.75%	0.66%	0.73%	0.58%	
American Indian/ Alaska Native	47	42	41	29	31	
	0.86%	0.77%	0.72%	0.54%	0.54%	
Asian	36	59	72	47	59	
	0.66%	1.08%	1.26%	0.88%	1.03%	
Native Hawaiian/ Other Pacific Islander	8	9	6	18	5	
	0.15%	0.16%	0.10%	0.34%	0.09%	
Other	12	7	1	10	11	
	0.22%	0.13%	0.02%	0.19%	0.19%	
Two or More Races	191	187	140	167	155	
	3.49%	3.42%	2.45%	3.13%	2.71%	

Population 18 and Over (2010 Census)						
	Voting Area 1	Voting Area 2	Voting Area 3	Voting Area 4	Voting Area 5	Variance
Population	4,231	4,075	4,472	4,085	4,436	
Population Variance	-29	-185	212	-175	176	7.11%
	-0.68%	-4.34%	4.98%	-4.10%	4.14%	
Hispanic/Latino	630	806	439	636	643	
	14.89%	19.78%	9.82%	15.57%	14.50%	
White	3,342	3,034	3,821	3,245	3,594	
	78.99%	74.45%	85.44%	79.44%	81.02%	
Black/ African American	47	31	32	24	24	
	1.11%	0.76%	0.72%	0.59%	0.54%	
American Indian/ Alaska Native	41	37	32	25	25	
	0.97%	0.91%	0.72%	0.61%	0.56%	
Asian	35	48	65	39	52	
	0.83%	1.18%	1.45%	0.95%	1.17%	
Native Hawaiian/ Other Pacific Islander	7	7	6	9	5	
	0.17%	0.17%	0.13%	0.22%	0.11%	
Other	9	6	1	7	8	
	0.21%	0.15%	0.02%	0.17%	0.18%	
Two or More Races	120	106	76	100	85	
	2.84%	2.60%	1.70%	2.45%	1.92%	

Citizens by Voting Age Population Estimate (2013-2017)						
	Voting Area 1	Voting Area 2	Voting Area 3	Voting Area 4	Voting Area 5	Variance
Population	3,916	3,581	3,448	3,364	3,550	
Population Variance	344	9	-124	-208	-22	7.11%
	9.64%	0.26%	-3.47%	-5.82%	-0.61%	
Hispanic/Latino	511	523	392	320	376	
	13.05%	14.60%	11.37%	9.51%	10.59%	
White	3,208	2,876	2,780	2,885	3,050	
	81.92%	80.31%	80.63%	85.76%	85.92%	
Black/ African American	56	25	68	21	41	
	1.43%	0.70%	1.97%	0.62%	1.15%	
American Indian/ Alaska Native	63	7	26	3	0	
	1.61%	0.20%	0.75%	0.09%	0.00%	
Asian	57	100	78	83	26	
	1.46%	2.79%	2.26%	2.47%	0.73%	
Native Hawaiian/ Other Pacific Islander	0	0	0	15	1	
	0.00%	0.00%	0.00%	0.45%	0.03%	
Other	0	0	0	0	0	
	0.00%	0.00%	0.00%	0.00%	0.00%	
Two or More Races	21	50	104	37	56	
	0.54%	1.40%	3.02%	1.10%	1.58%	